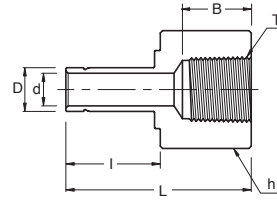


## SFA Female Adapter



### Connects Fractional **SUPERLOK** Port To Male NPT Thread

Part No.	Tube O.D. D (inch)	T* (NPT)	d (Min)	Width Across Flat h (inch)	I	L
SFA 2 - 2N	1/8	1/8	2.10	9/16	13.45	31.50
SFA 2 - 4N	1/8	1/4	2.10	3/4	13.45	35.30
SFA 3 - 2N	3/16	1/8	3.04	9/16	14.20	32.00
SFA 3 - 4N	3/16	1/4	3.04	3/4	14.20	35.81
SFA 4 - 2N	1/4	1/8	4.40	9/16	15.75	33.02
SFA 4 - 4N	1/4	1/4	4.40	3/4	15.75	37.10
SFA 4 - 6N	1/4	3/8	4.40	7/8	15.75	39.37
SFA 4 - 8N	1/4	1/2	4.40	1-1/16	15.75	45.50
SFA 5 - 2N	5/16	1/8	5.60	9/16	16.80	34.29
SFA 5 - 4N	5/16	1/4	5.60	3/4	16.80	37.59
SFA 6 - 2N	3/8	1/8	6.90	9/16	17.50	34.29
SFA 6 - 4N	3/8	1/4	6.90	3/4	17.50	38.10
SFA 6 - 6N	3/8	3/8	6.90	7/8	17.50	40.38
SFA 6 - 8N	3/8	1/2	6.90	1-1/16	17.50	46.73
SFA 8 - 4N	1/2	1/4	9.40	3/4	23.20	43.43
SFA 8 - 6N	1/2	3/8	9.40	7/8	23.20	45.46
SFA 8 - 8N	1/2	1/2	9.40	1-1/16	23.20	51.80
SFA 10 - 6N	5/8	3/8	12.00	7/8	24.70	48.26
SFA 10 - 8N	5/8	1/2	12.00	1-1/16	24.70	53.08
SFA 12 - 8N	3/4	1/2	14.80	1-1/16	24.70	52.83
SFA 12 - 12N	3/4	3/4	14.80	1-5/16	24.70	54.86
SFA 12 - 16N	3/4	1	14.80	1-5/8	24.70	58.42
SFA 14 - 12N	7/8	3/4	17.27	1-5/16	26.70	57.15
SFA 16 - 12N	1	3/4	20.40	1-5/16	31.70	60.70
SFA 16 - 16N	1	1	20.40	1-5/8	31.70	64.26

\* ISO Tapered Threads are available upon request

### Connects Metric **SUPERLOK** Port To Male NPT Thread

Part No.	Tube O.D. (D)	T* (NPT)	d (Min)	Width Across Flat (h)	I	L
SFA 3M - 2N	3	1/8	1.8	14	13.15	31.2
SFA 6M - 2N	6	1/8	4.1	14	15.75	32.5
SFA 6M - 4N	6	1/4	4.1	19	15.75	37.1
SFA 8M - 4N	8	1/4	5.6	19	16.50	37.6
SFA 10M - 4N	10	1/4	7.1	19	17.50	38.1
SFA 10M - 6N	10	3/8	7.1	22	17.50	40.1
SFA 10M - 8N	10	1/2	7.1	27	17.50	46.5
SFA 12M - 4N	12	1/4	8.8	19	23.50	43.7
SFA 12M - 6N	12	3/8	8.8	22	23.50	46.0
SFA 12M - 8N	12	1/2	8.8	27	23.50	52.3
SFA 18M - 12N	18	3/4	13.9	32	24.90	54.8

\* ISO Tapered Threads are available upon request

• All dimensions in millimeters unless specified as "inch". Dimension are for reference only, subject to change