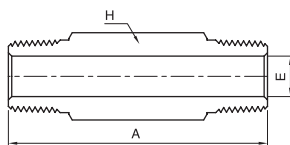


IHLN

Hex Long Nipple



Male NPT Threads

Part Number	NPT Pipe Size	Dimension			Pressure Ratings, psig(bar)	
		A	E	H	SS316, Steel	Brass
IHLN - 2N	1/8	*	4.8	11.1	10000(689)	5000(344)
IHLN - 4N	1/4	*	7.1	14.2	8000(551)	4000(275)
IHLN - 6N	3/8	*	9.6	17.4	7800(537)	3900(268)
IHLN - 8N	1/2	*	11.9	22.2	7700(530)	3800(261)
IHLN - 12N	3/4	*	15.7	26.9	7300(502)	3600(248)
IHLN - 16N	1	*	22.4	34.9	5300(365)	2600(179)

※ NOTE : The length of Nipple "A" is defined by user
Part Number Example : IHLN - 8N - 100L(length "A" : 100mm)

※ ISO Tapered Threads are available upon request.

• All dimensions in millimeters unless specified as "inch". Dimension are for reference only, subject to change.