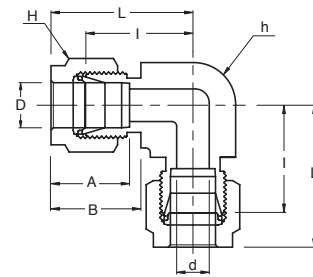


## SUE Union Elbow



### Connects Fractional Tubes

Part No.	Tube O.D. D (inch)	d Min	Width Across Flat		A	B	I	L
			h (inch)	H (inch)				
SUE - 1	1/16	1.27	3/8	5/16	8.63	10.92	14.00	18.03
SUE - 2	1/8	2.28	3/8	7/16	12.70	15.24	15.74	22.35
SUE - 3	3/16	3.04	1/2	1/2	13.71	16.00	18.54	25.14
SUE - 4	1/4	4.82	1/2	9/16	15.24	17.78	20.10	27.40
SUE - 5	5/16	6.35	5/8	5/8	16.25	18.54	22.35	29.71
SUE - 6	3/8	7.11	5/8	11/16	16.76	19.30	23.11	30.48
SUE - 8	1/2	10.41	13/16	7/8	22.86	21.84	25.90	36.06
SUE - 10	5/8	12.70	15/16	1	24.38	21.84	27.94	38.10
SUE - 12	3/4	15.74	1-1/16	1-1/8	24.38	21.84	29.71	39.87
SUE - 14	7/8	18.28	1-3/8	1-1/4	25.90	21.84	34.54	44.70
SUE - 16	1	22.35	1-3/8	1-1/2	31.24	26.41	36.83	49.02
SUE - 20	1-1/4	27.69	1-11/16	1-7/8	41.15	38.86	44.45	66.55
SUE - 24	1-1/2	34.04	2	2-1/4	50.04	45.21	50.80	77.98
SUE - 32	2	45.97	2-3/4	3	67.56	62.74	69.85	107.19

### Connects Metric Tubes

Part No.	Tube O.D. D	d Min	Width Across Flat		A	B	I	L
			h	H				
SUE - 2M	2	1.7	9.5	12	12.9	15.3	15.7	22.3
SUE - 3M	3	2.4	9.5	12	12.9	15.3	15.7	22.3
SUE - 4M	4	2.4	12.7	12	13.7	16.1	18.8	25.4
SUE - 6M	6	4.8	12.7	14	15.3	17.7	19.6	27.0
SUE - 8M	8	6.4	15.9	16	16.2	18.6	22.4	29.9
SUE - 10M	10	7.9	17.5	19	17.2	19.5	23.9	31.5
SUE - 12M	12	9.5	20.6	22	22.8	22.0	25.9	36.0
SUE - 15M	15	11.9	23.8	25	24.4	22.0	27.9	38.8
SUE - 16M	16	12.7	23.8	25	24.4	22.0	27.9	38.0
SUE - 18M	18	15.1	27.0	30	24.4	22.0	29.7	39.8
SUE - 20M	20	15.9	34.9	32	26.0	22.0	34.5	44.6
SUE - 22M	22	18.3	34.9	32	26.0	22.0	34.5	44.6
SUE - 25M	25	21.8	34.9	38	31.3	26.5	36.8	49.1
SUE - 28M	28	21.8	41	46	36.6	36.6	43.2	64.0
SUE - 30M	30	26.2	46	50	39.6	39.2	48.3	69.9
SUE - 32M	32	28.6	46	50	42.0	41.6	49.3	72.3
SUE - 38M	38	33.7	55	60	49.4	47.9	56.4	84.0

• All dimensions in millimeters unless specified as "inch". Dimension are for reference only, subject to change