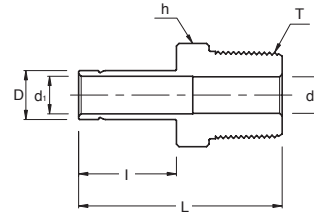


## SMA Male Adapter



### Connects Fractional **SUPERLOK** Port To Female NPT Thread

Part No.	Tube O.D. D (inch)	T* (NPT)	d (Min)	d <sub>1</sub>	Width Across Flat h (inch)	I	L
SMA 2 - 2N	1/8	1/8	4.82	2.10	7/16	13.45	29.50
SMA 2 - 4N	1/8	1/4	7.11	2.10	9/16	13.45	34.80
SMA 3 - 2N	3/16	1/8	4.82	3.04	7/16	14.20	30.22
SMA 3 - 4N	3/16	1/4	7.11	3.04	9/16	14.20	35.56
SMA 4 - 2N	1/4	1/8	4.40	4.40	7/16	15.75	31.80
SMA 4 - 4N	1/4	1/4	4.40	4.40	9/16	15.75	37.08
SMA 4 - 6N	1/4	3/8	4.40	4.40	11/16	15.75	37.84
SMA 4 - 8N	1/4	1/2	4.40	4.40	7/8	15.75	43.43
SMA 5 - 2N	5/16	1/8	4.82	5.60	7/16	16.80	32.76
SMA 5 - 4N	5/16	1/4	6.35	5.60	9/16	16.80	38.10
SMA 6 - 2N	3/8	1/8	4.82	6.90	7/16	17.50	33.50
SMA 6 - 4N	3/8	1/4	6.90	6.90	9/16	17.50	38.90
SMA 6 - 6N	3/8	3/8	6.90	6.90	11/16	17.50	39.60
SMA 6 - 8N	3/8	1/2	6.90	6.90	7/8	17.50	45.20
SMA 8 - 4N	1/2	1/4	7.11	9.40	9/16	23.20	44.50
SMA 8 - 6N	1/2	3/8	9.40	9.40	11/16	23.20	45.20
SMA 8 - 8N	1/2	1/2	9.40	9.40	7/8	23.20	50.80
SMA 10 - 6N	5/8	3/8	9.90	12.00	11/16	24.70	47.40
SMA 10 - 8N	5/8	1/2	12.00	12.00	7/8	24.70	52.30
SMA 10 - 12N	5/8	3/4	14.98	12.00	1-1/16	24.70	52.30
SMA 12 - 8N	3/4	1/2	11.94	14.80	7/8	24.70	52.30
SMA 12 - 12N	3/4	3/4	14.80	14.80	1-1/16	24.70	52.30
SMA 12 - 16N	3/4	1	20.32	14.80	1-3/8	24.70	57.91
SMA 14 - 12N	7/8	3/4	14.98	17.27	1-1/16	26.70	54.30
SMA 16 - 12N	1	3/4	15.74	20.40	1-1/16	31.70	58.70
SMA 16 - 16N	1	1	20.40	20.40	1-3/8	31.70	66.00

\* ISO Tapered Threads are available upon request

### Connects Metric **SUPERLOK** Port To Female NPT Thread

Part No.	Tube O.D. (D)	T* (NPT)	d (Min)	d <sub>1</sub>	Width Across Flat (h)	I	L
SMA 6M - 2N	6	1/8	4.1	4.1	12	15.75	32.8
SMA 6M - 4N	6	1/4	4.1	4.1	14	15.75	38.1
SMA 8M - 4N	8	1/4	5.6	5.6	14	16.50	39.1
SMA 10M - 4N	10	1/4	7.1	7.1	14	17.50	39.9
SMA 10M - 6N	10	3/8	7.1	7.1	18	17.50	40.6
SMA 10M - 8N	10	1/2	11.9	7.1	22	17.50	46.2
SMA 12M - 4N	12	1/4	7.1	8.8	16	23.50	46.5
SMA 12M - 8N	12	1/2	11.9	8.8	22	23.50	52.0
SMA 18M - 12N	18	3/4	15.9	13.9	27	24.90	54.8

\* ISO Tapered Threads are available upon request

• All dimensions in millimeters unless specified as "inch". Dimension are for reference only, subject to change