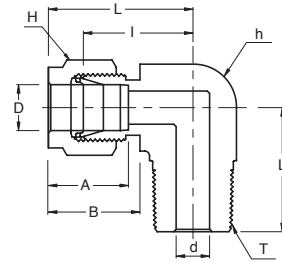


SME
Male Elbow

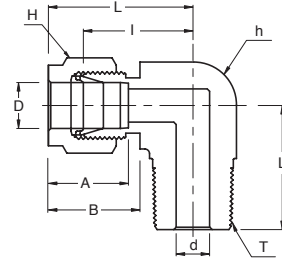


Connects Fractional Tube To Female NPT Thread

Part No.	Tube O.D. D (inch)	T (NPT)	d Min	Width Across Flat		A	B	I	L	L ₁
				h (inch)	H (inch)					
SME 2 - 2N	1/8	1/8	2.28	1/2	7/16	12.70	15.24	18.00	24.30	18.80
SME 2 - 4N	1/8	1/4	2.28	1/2	7/16	12.70	15.24	18.00	24.30	23.36
SME 3 - 2N	3/16	1/8	3.04	1/2	1/2	13.71	16.00	18.79	25.40	18.79
SME 3 - 4N	3/16	1/4	3.04	1/2	1/2	13.71	16.00	18.79	25.40	23.36
SME 4 - 2N	1/4	1/8	4.82	1/2	9/16	15.24	17.78	19.55	26.92	18.79
SME 4 - 4N	1/4	1/4	4.82	1/2	9/16	15.24	17.78	19.55	26.92	23.36
SME 4 - 6N	1/4	3/8	4.82	5/8	9/16	15.24	17.78	22.35	29.71	26.16
SME 4 - 8N	1/4	1/2	4.82	13/16	9/16	15.24	17.78	24.38	31.75	33.02
SME 5 - 2N	5/16	1/8	4.82	9/16	5/8	16.25	18.54	21.33	28.70	19.81
SME 5 - 4N	5/16	1/4	6.35	9/16	5/8	16.25	18.54	21.33	28.70	24.38
SME 5 - 6N	5/16	3/8	6.35	11/16	5/8	16.25	18.54	23.11	30.48	26.16
SME 6 - 2N	3/8	1/8	4.82	5/8	11/16	16.76	19.30	23.11	30.48	20.82
SME 6 - 4N	3/8	1/4	7.11	5/8	11/16	16.76	19.30	23.11	30.48	25.40
SME 6 - 6N	3/8	3/8	7.11	5/8	11/16	16.76	19.30	23.87	31.24	26.16
SME 6 - 8N	3/8	1/2	7.11	13/16	11/16	16.76	19.30	25.90	33.27	33.02
SME 6 - 12N	3/8	3/4	7.11	1-1/16	11/16	16.76	19.30	29.71	37.08	36.83
SME 8 - 4N	1/2	1/4	7.11	13/16	7/8	22.86	21.84	25.90	36.06	28.19
SME 8 - 6N	1/2	3/8	9.65	13/16	7/8	22.86	21.84	25.90	36.06	28.19
SME 8 - 8N	1/2	1/2	10.41	13/16	7/8	22.86	21.84	25.90	36.06	33.02
SME 8 - 12N	1/2	3/4	10.41	1-1/16	7/8	22.86	21.84	29.71	39.87	36.83
SME 10 - 6N	5/8	3/8	9.65	15/16	1	24.38	21.84	27.94	38.10	30.22
SME 10 - 8N	5/8	1/2	11.93	15/16	1	24.38	21.84	27.94	38.10	35.10
SME 10 - 12N	5/8	3/4	12.70	1-1/16	1	24.38	21.84	29.71	39.87	36.83
SME 12 - 8N	3/4	1/2	11.93	1-1/16	1-1/8	24.38	21.84	29.71	39.87	36.83
SME 12 - 12N	3/4	3/4	15.74	1-1/16	1-1/8	24.38	21.84	29.71	39.87	36.83
SME 14 - 12N	7/8	3/4	15.74	1-3/8	1-1/4	25.90	21.84	34.54	44.70	41.65
SME 16 - 1 2N	1	3/4	15.74	1-3/8	1-1/2	31.24	26.41	36.83	49.02	41.65
SME 16 - 16N	1	1	22.35	1-3/8	1-1/2	31.24	26.41	36.83	49.02	46.48
SME 20 - 20N	1-1/4	1-1/4	27.69	1-11/16	1-7/8	41.15	38.86	44.45	66.55	47.75
SME 24 - 24N	1-1/2	1-1/2	34.04	2	2-1/4	50.04	45.21	50.80	77.98	60.45
SME 32 - 32N	2	2	45.97	2-3/4	3	67.56	62.74	69.85	107.19	70.61

• All dimensions in millimeters unless specified as "inch". Dimension are for reference only, subject to change

SME Male Elbow

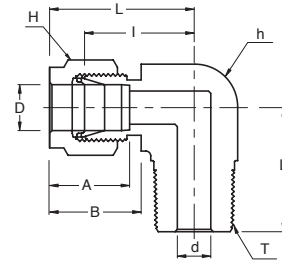


Connects Metric Tubes To Female NPT Thread

Part No.	Tube O.D. D	T (NPT)	d Min	Width Across Flat		A	B	I	L	L ₁
				h	H					
SME 3M - 2N	3	1/8	2.4	12.7	12	12.9	15.3	17.0	23.6	17.8
SME 3M - 4N	3	1/4	2.4	12.7	12	12.9	15.3	18.0	24.6	23.4
SME 4M - 2N	4	1/8	2.4	12.7	12	13.7	16.1	18.8	25.4	18.8
SME 4M - 4N	4	1/4	2.4	12.7	12	13.7	16.1	18.8	25.4	23.4
SME 6M - 2N	6	1/8	4.8	12.7	14	15.3	17.7	19.6	27.0	18.8
SME 6M - 4N	6	1/4	4.8	12.7	14	15.3	17.7	19.6	27.0	23.4
SME 6M - 6N	6	3/8	4.8	15.9	14	15.3	17.7	22.4	29.8	26.2
SME 6M - 8N	6	1/2	4.8	20.6	14	15.3	17.7	24.4	31.8	33.0
SME 8M - 2N	8	1/8	4.8	14.3	16	16.2	18.6	21.3	28.8	19.8
SME 8M - 4N	8	1/4	6.4	14.3	16	16.2	18.6	21.3	28.8	24.4
SME 8M - 6N	8	3/8	6.4	15.9	16	16.2	18.6	23.1	30.6	26.2
SME 8M - 8N	8	1/2	6.4	20.6	16	16.2	18.6	25.1	32.6	33.0
SME 10M - 2N	10	1/8	4.8	17.5	19	17.2	19.5	23.9	31.5	21.6
SME 10M - 4N	10	1/4	7.1	17.5	19	17.2	19.5	23.9	31.5	26.2
SME 10M - 6N	10	3/8	7.9	17.5	19	17.2	19.5	23.9	31.5	26.2
SME 10M - 8N	10	1/2	7.9	20.6	19	17.2	19.5	25.9	33.5	33.0
SME 12M - 4N	12	1/4	7.1	20.6	22	22.8	22.0	25.9	36.0	28.2
SME 12M - 6N	12	3/8	9.5	20.6	22	22.8	22.0	25.9	36.0	28.2
SME 12M - 8N	12	1/2	9.5	20.6	22	22.8	22.0	25.9	36.0	33.0
SME 12M - 12N	12	3/4	9.5	27.0	22	22.8	22.0	29.7	39.8	36.8
SME 16M - 6N	16	3/8	9.5	23.8	25	24.4	22.0	27.9	38.0	30.2
SME 16M - 8N	16	1/2	11.9	23.8	25	24.4	22.0	27.9	38.0	35.1
SME 16M - 12N	16	3/4	12.7	27.0	25	24.4	22.0	29.7	39.8	36.8
SME 18M - 8N	18	1/2	11.9	27.0	30	24.4	22.0	29.7	39.8	36.8
SME 18M - 12N	18	3/4	15.1	27.0	30	24.4	22.0	29.7	39.8	36.8
SME 20M - 8N	20	1/2	11.9	34.9	32	26.0	22.0	34.5	44.6	41.7
SME 20M - 12N	20	3/4	15.9	34.9	32	26.0	22.0	34.5	44.6	41.7
SME 22M - 12N	22	3/4	15.9	34.9	32	26.0	22.0	34.5	44.6	41.7
SME 22M - 16N	22	1	18.3	34.9	32	26.0	22.0	34.5	44.6	46.5
SME 25M - 12N	25	3/4	15.9	34.9	38	31.3	26.5	36.8	49.1	41.7
SME 25M - 16N	25	1	21.8	34.9	38	31.3	26.5	36.8	49.1	46.5
SME 30M - 20N	30	1-1/4	26.2	46	50	39.6	39.2	48.3	69.9	53.1
SME 32M - 20N	32	1-1/4	27.8	46	50	42.0	41.6	49.3	72.3	53.1
SME 38M - 24N	38	1-1/2	33.7	55	60	49.4	47.9	56.4	84.0	60.4

• All dimensions in millimeters unless specified as "inch". Dimension are for reference only, subject to change

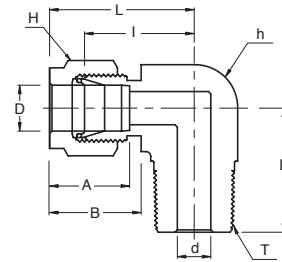
SME Male Elbow



Connects Metric Tubes To Female ISO Tapered Thread

Part No.	Tube O.D. D	T R (PT)	d Min	Width Across Flat		A	B	I	L	L ₁
				h	H					
SME 3M - 2R	3	1/8	2.4	12.7	12	12.9	15.3	17.0	23.6	17.8
SME 3M - 4R	3	1/4	2.4	12.7	12	12.9	15.3	18.0	24.6	23.4
SME 4M - 2R	4	1/8	2.4	12.7	12	13.7	16.1	18.8	25.4	18.8
SME 4M - 4R	4	1/4	2.4	12.7	12	13.7	16.1	18.8	25.4	23.4
SME 6M - 2R	6	1/8	4.8	12.7	14	15.3	17.7	19.6	27.0	18.8
SME 6M - 4R	6	1/4	4.8	12.7	14	15.3	17.7	19.6	27.0	23.4
SME 6M - 6R	6	3/8	4.8	15.9	14	15.3	17.7	22.4	29.8	26.2
SME 6M - 8R	6	1/2	4.8	20.6	14	15.3	17.7	24.4	31.8	33.0
SME 8M - 2R	8	1/8	4.8	14.3	16	16.2	18.6	21.3	28.8	19.8
SME 8M - 4R	8	1/4	6.4	14.3	16	16.2	18.6	21.3	28.8	24.4
SME 8M - 6R	8	3/8	6.4	15.9	16	16.2	18.6	23.1	30.6	26.2
SME 8M - 8R	8	1/2	6.4	20.6	16	16.2	18.6	25.1	32.6	33.0
SME 10M - 4R	10	1/4	7.1	17.5	19	17.2	19.5	23.9	31.5	26.2
SME 10M - 6R	10	3/8	7.9	17.5	19	17.2	19.5	23.9	31.5	26.2
SME 10M - 8R	10	1/2	7.9	20.6	19	17.2	19.5	25.9	33.5	33.0
SME 12M - 2R	12	1/8	4.8	20.6	22	22.8	22.0	25.9	36.0	23.6
SME 12M - 4R	12	1/4	7.1	20.6	22	22.8	22.0	25.9	36.0	28.2
SME 12M - 6R	12	3/8	9.5	20.6	22	22.8	22.0	25.9	36.0	28.2
SME 12M - 8R	12	1/2	9.5	20.6	22	22.8	22.0	25.9	36.0	33.0
SME 12M - 12R	12	3/4	9.5	27.0	22	22.8	22.0	29.7	39.8	36.8
SME 16M - 6R	16	3/8	9.5	23.8	25	24.4	22.0	27.9	38.0	30.2
SME 16M - 8R	16	1/2	11.9	23.8	25	24.4	22.0	27.9	38.0	35.1
SME 18M - 8R	18	1/2	11.9	27.0	30	24.4	22.0	29.7	39.8	36.8
SME 18M - 12R	18	3/4	15.1	27.0	30	24.4	22.0	29.7	39.8	36.8
SME 20M - 8R	20	1/2	11.9	34.9	32	26.0	22.0	34.5	44.6	41.7
SME 20M - 12R	20	3/4	15.9	34.9	32	26.0	22.0	34.5	44.6	41.7
SME 22M - 12R	22	3/4	15.9	34.9	32	26.0	22.0	34.5	44.6	41.7
SME 22M - 16R	22	1	18.3	34.9	32	26.0	22.0	34.5	44.6	46.5
SME 25M - 12R	25	3/4	15.9	34.9	38	31.3	26.5	36.8	49.1	41.7
SME 25M - 16R	25	1	21.8	34.9	38	31.3	26.5	36.8	49.1	46.5

SME
Male Elbow



Connects Fractional Tubes To Female ISO Tapered Thread

Part No.	Tube O.D. D (inch)	T R (PT)	d Min	Width Across Flat		A	B	I	L	L ₁
				h (inch)	H (inch)					
SME 4 - 2R	1/4	1/8	4.82	1/2	9/16	15.24	17.78	19.55	26.92	18.79
SME 4 - 4R	1/4	1/4	4.82	1/2	9/16	15.24	17.78	19.55	26.92	23.36
SME 4 - 6R	1/4	3/8	4.82	5/8	9/16	15.24	17.78	22.35	29.71	26.16
SME 4 - 8R	1/4	1/2	4.82	13/16	9/16	15.24	17.78	24.38	31.75	33.02
SME 5 - 4R	5/16	1/4	6.35	9/16	5/8	16.25	18.54	21.33	28.70	24.38
SME 6 - 4R	3/8	1/4	7.11	5/8	11/16	16.76	19.30	23.11	30.48	25.40
SME 6 - 6R	3/8	3/8	7.11	5/8	11/16	16.76	19.30	23.87	31.24	26.16
SME 8 - 6R	1/2	3/8	9.65	13/16	7/8	22.86	21.84	25.91	36.07	28.20
SME 8 - 8R	1/2	1/2	10.41	13/16	7/8	22.86	21.84	25.91	36.07	33.02

• All dimensions in millimeters unless specified as "inch". Dimension are for reference only, subject to change